

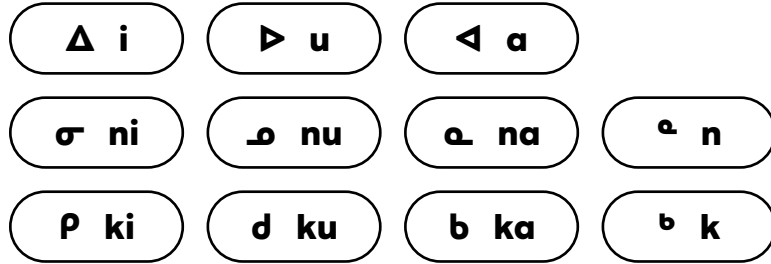


የዐ ልዎ? Kina Una?

ጥናር-ገጽ ጥናር-ገጽ
Uqalimaariuqsauti Uqalimaagaq
Reading Practice Book



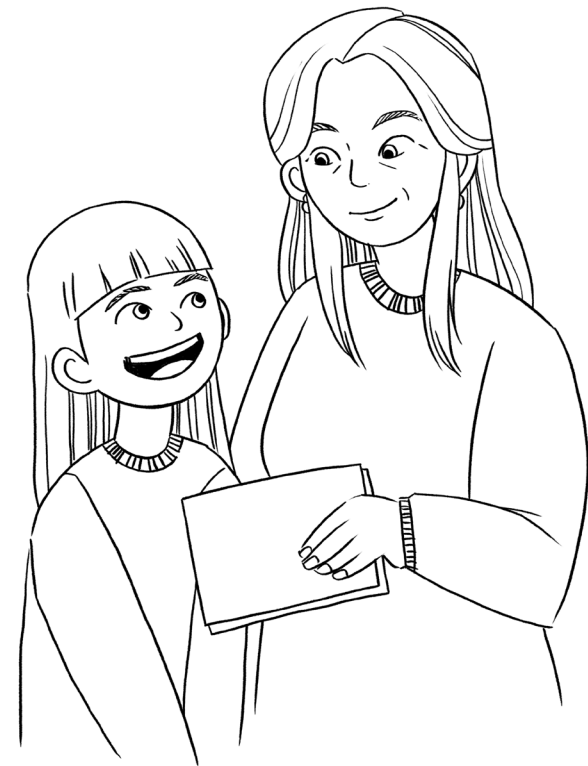
Syllabics and letters used in this book:



long vowels

After practising these sounds, help your child use what they've learned to read this book.

Pe ▸ e? Kina Una?

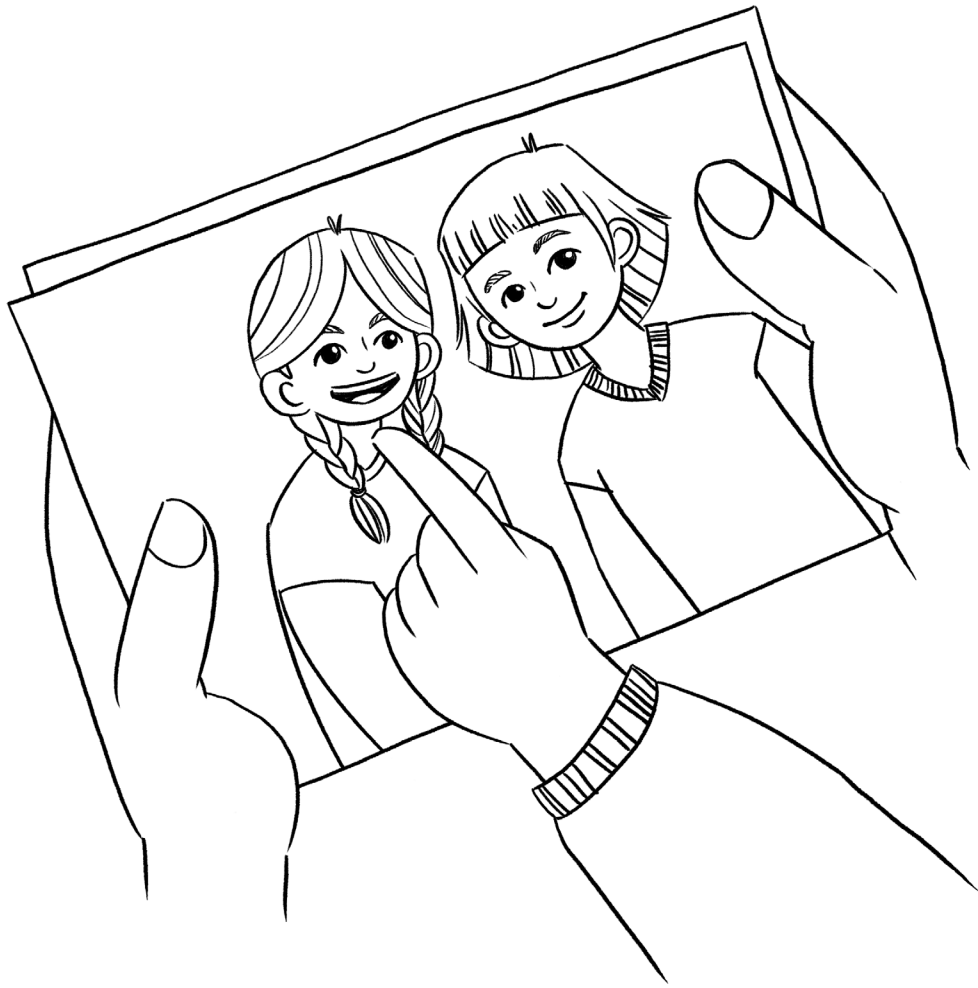




“Δᵇᵑ!”

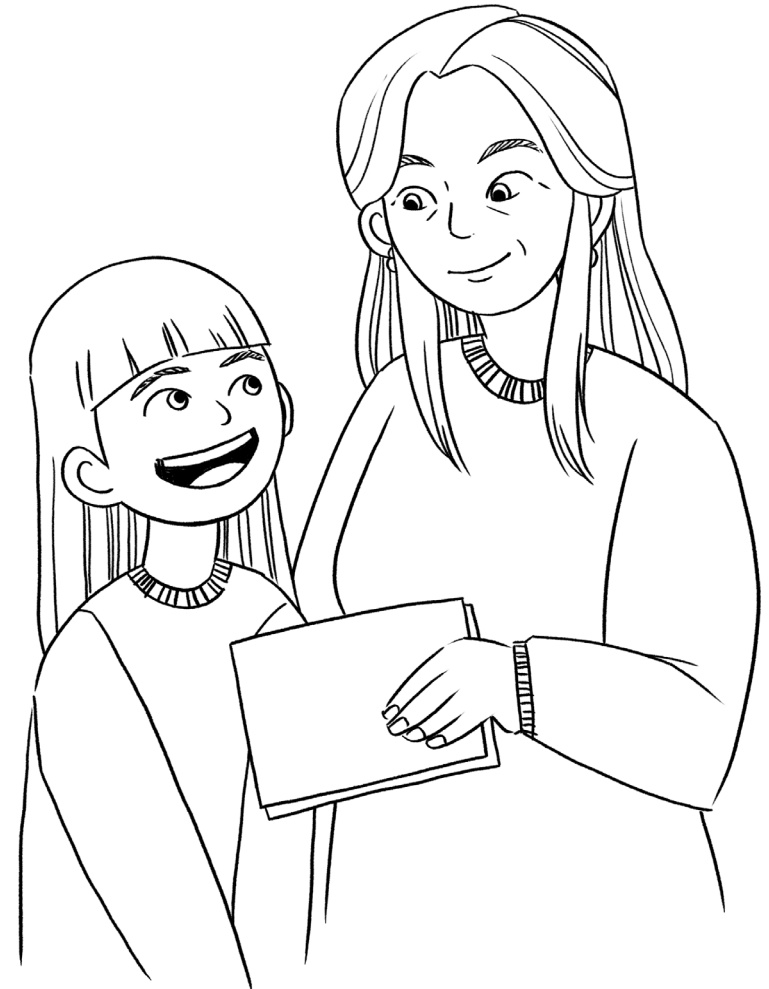
“Ikkii!”





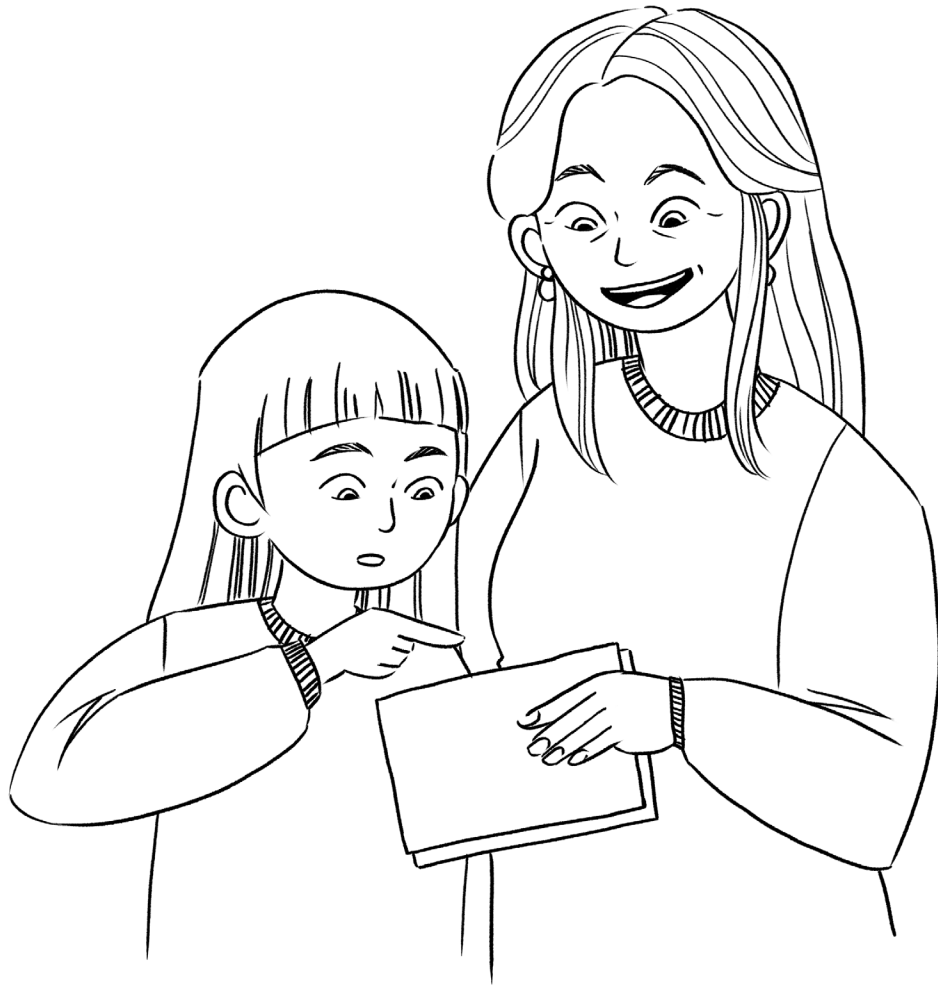
“Pa Δa?”

“Kina una?”



“Δa Δσ.”

“Una Aani.”

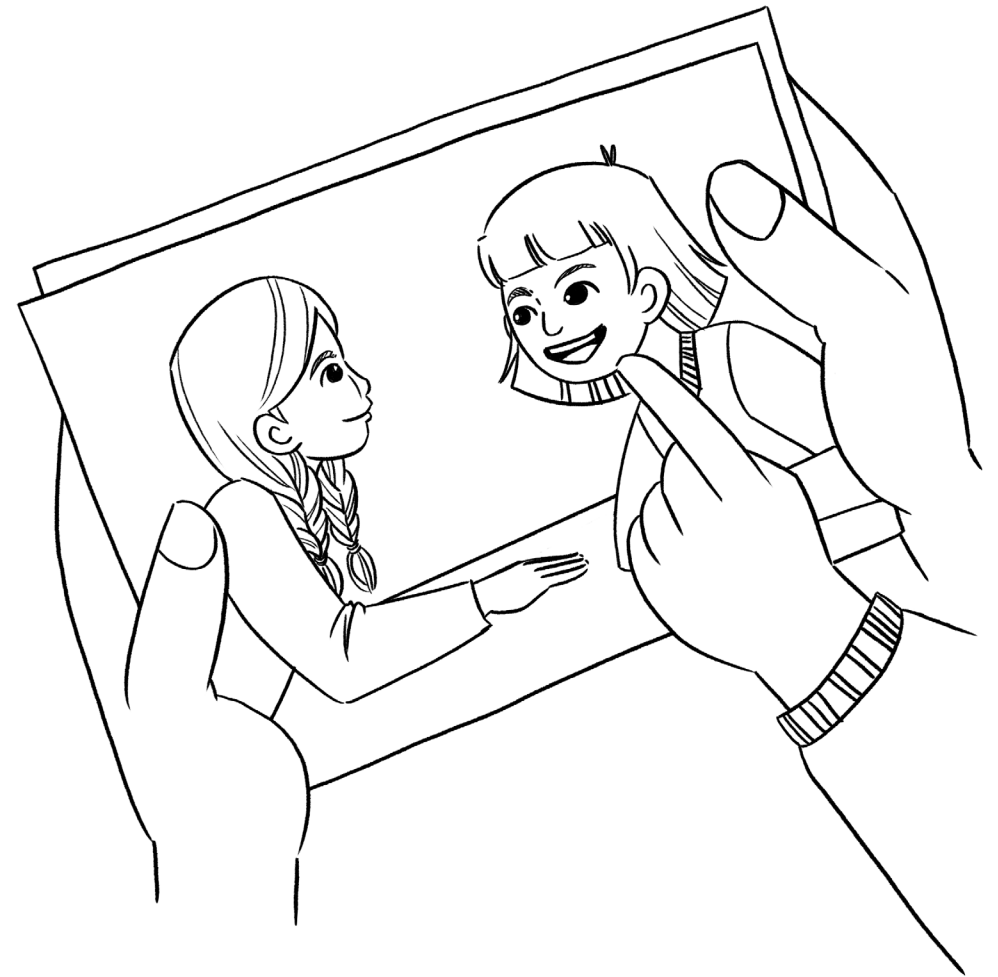


“▷α ◁σ?”

“Δ, ◁σ ▷α.”

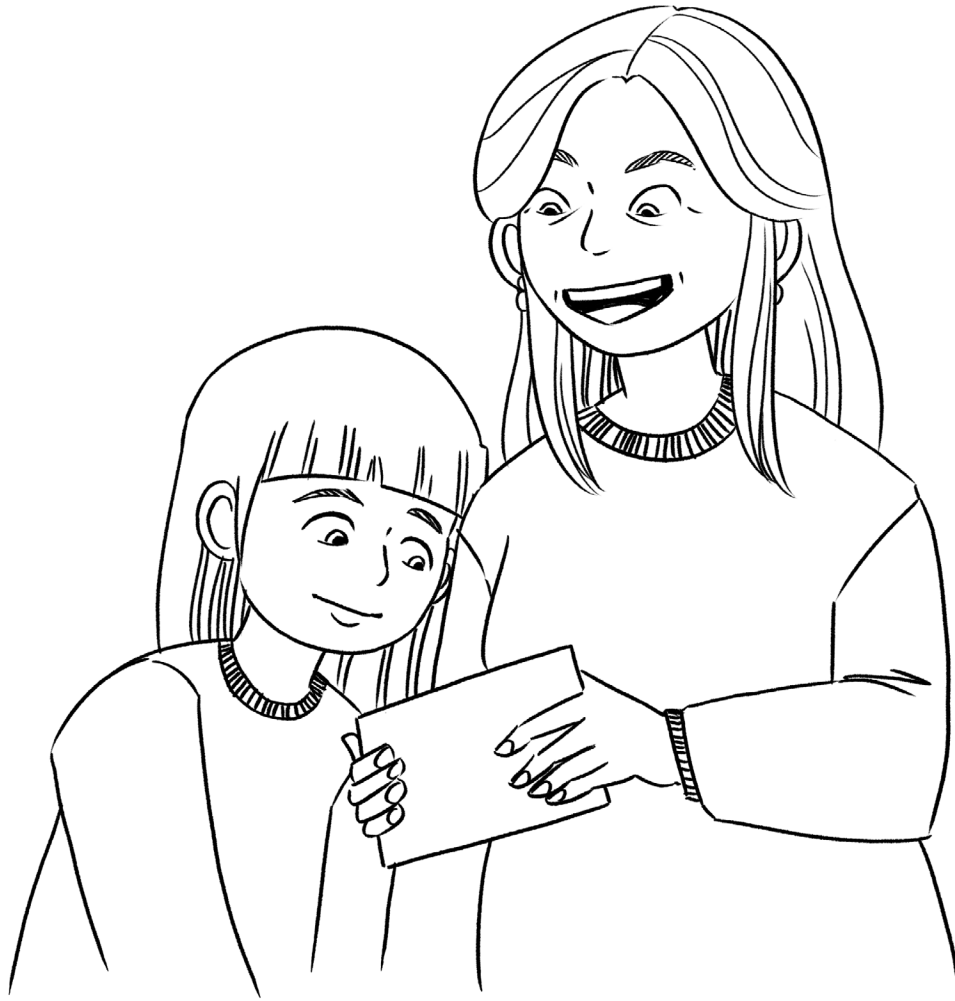
“Una Aani?”

“Ii, Aani una.”



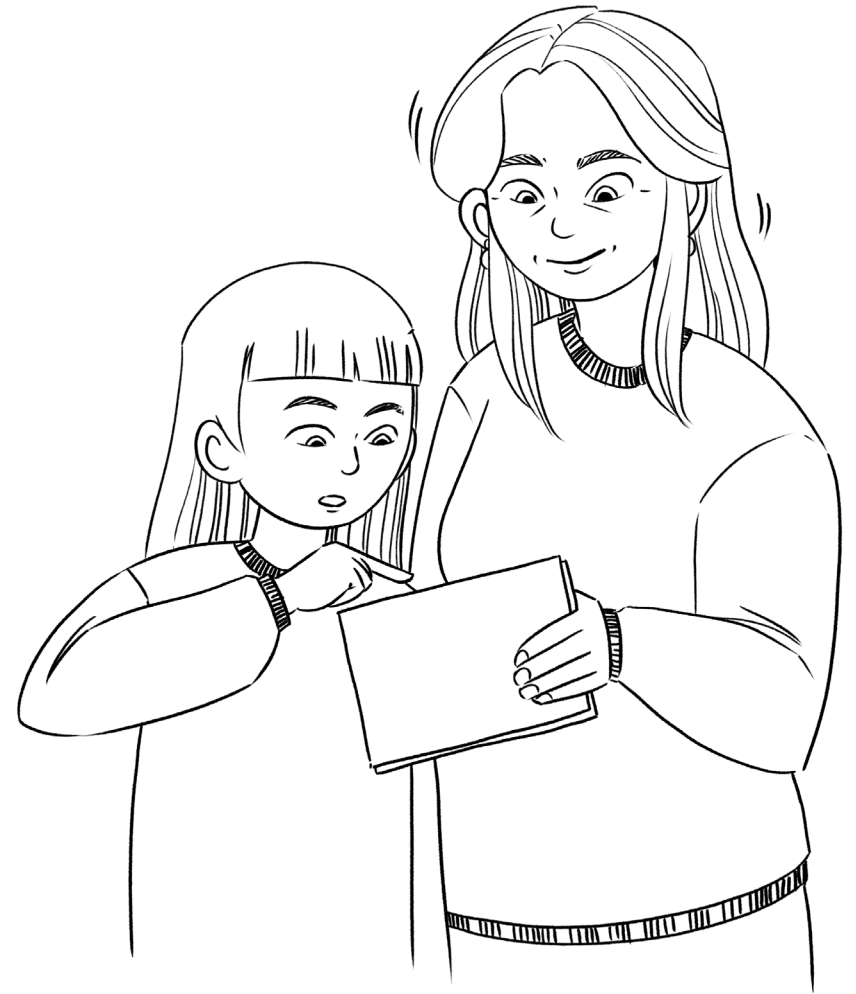
“▷α ρα ◁ρ◁σ?”

“Una kina akiani?”



“▷α σα.”

“Una Niina.”

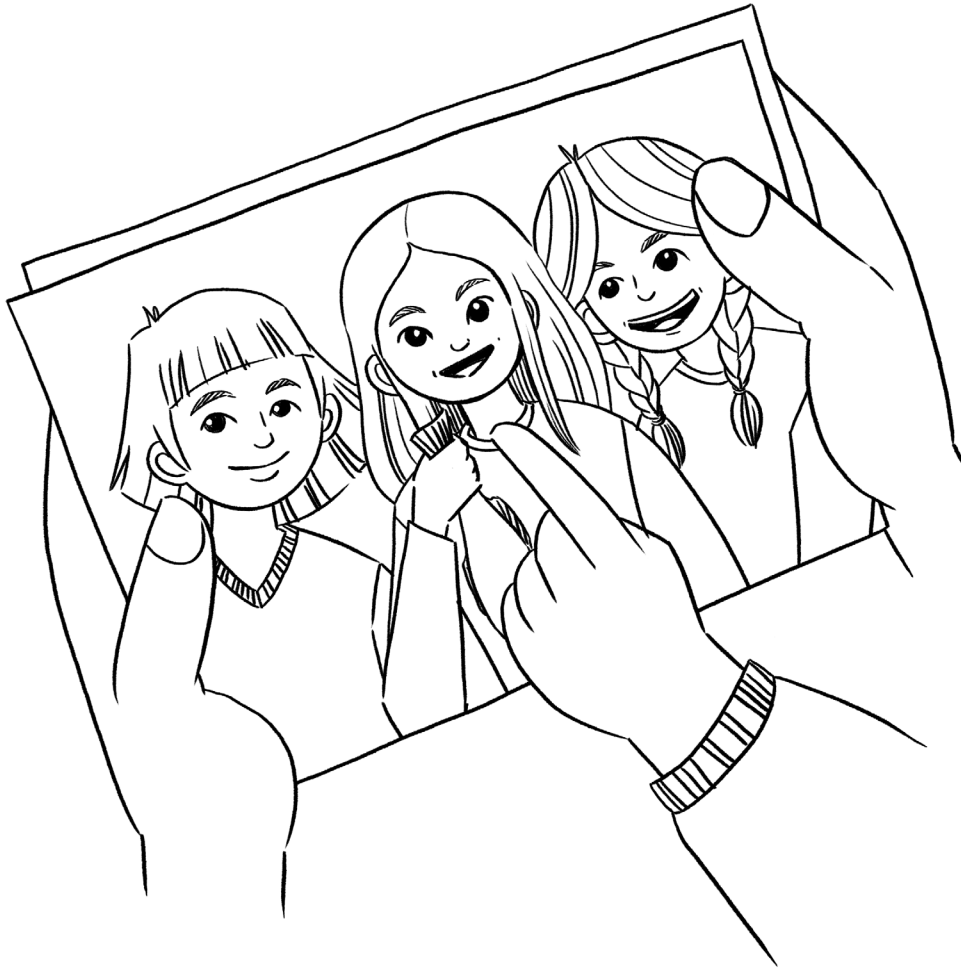


“▷α σα?”

“Δ, σα ▷α.”

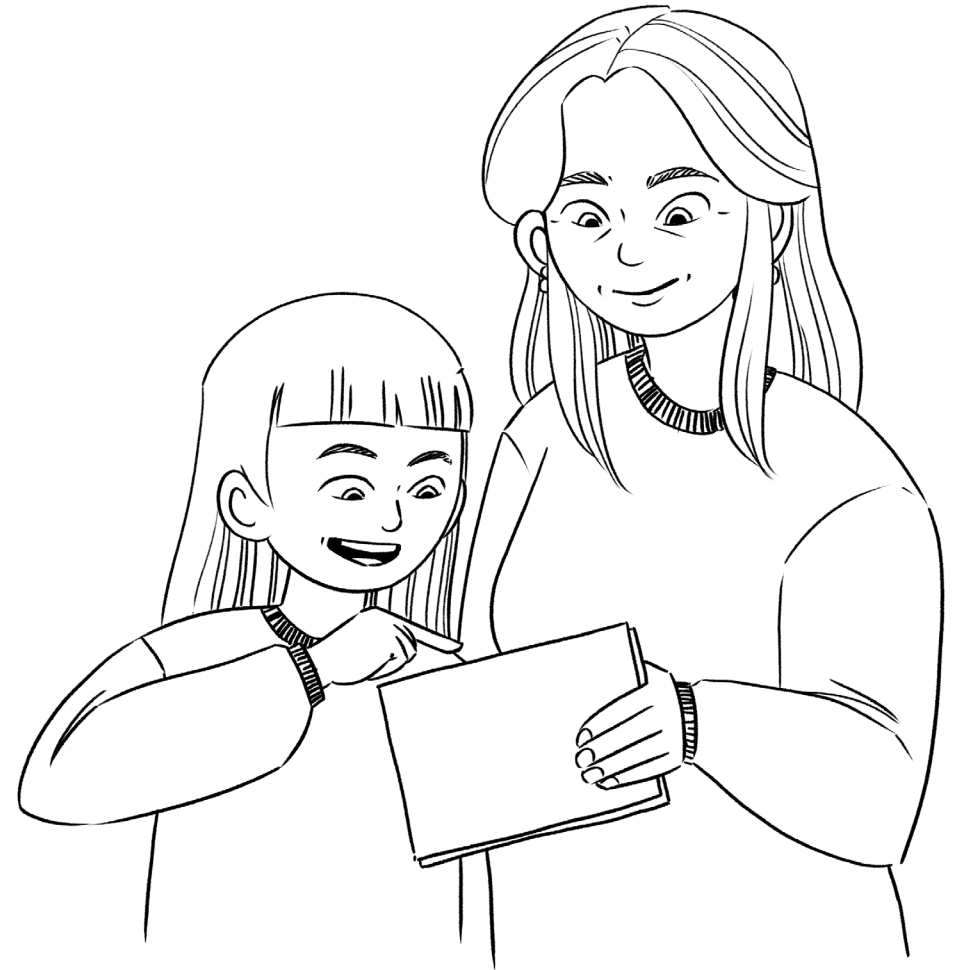
“Una Niina?”

“Ii, Niina una.”



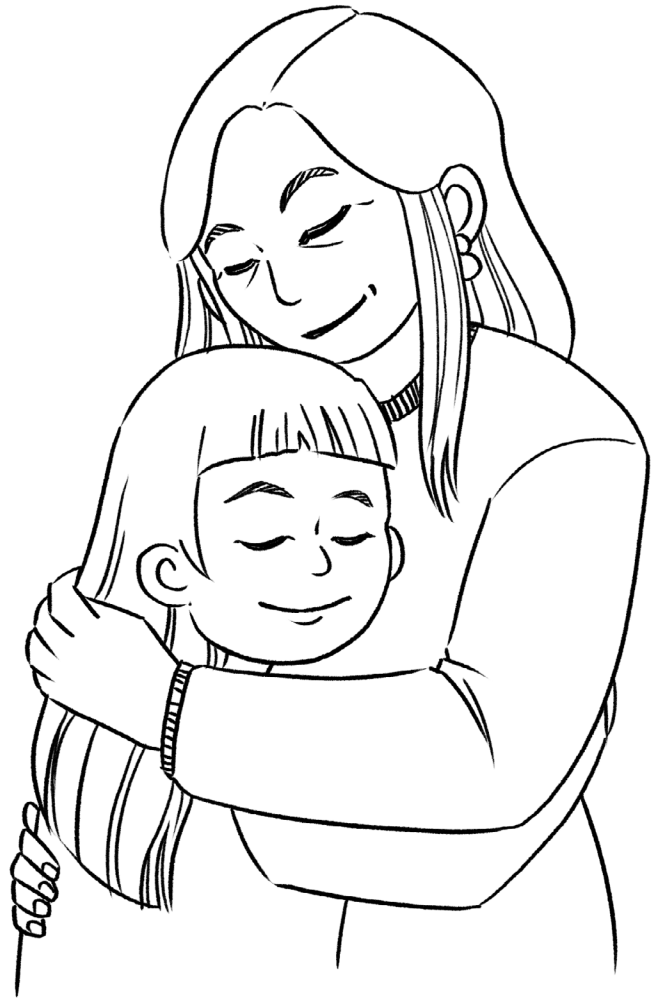
“▷ᑲ ᑲᑲ?”

“Una kina?”



“◁ᑲᑲ?”

“Anaana?”



“ᐃ!”

“ᐃ!”

Nunavut Bilingual Education Society (NBES)

2434 Paurngaq Cres.
Iqaluit, Nunavut, Canada
admin@nbes.ca

